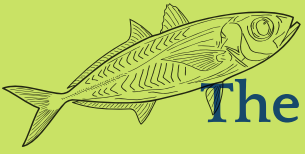


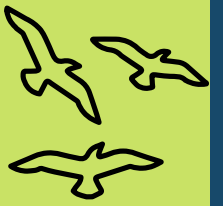
Marine Ecosystem



Brief Description



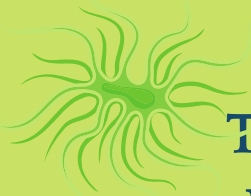
The Marine ecosystem relies greatly on the balance of all living organisms and a removal of one species, especially at the bottom of the ecosystem can have major effects on the rest of the food chain.



At the bottom of the marine ecosystem, like all ecosystems, the primary consumers consist of seaweed and phytoplankton. Because they are the primary consumers they make their own food which they do by photosynthesising. The herbivorous consumers e.g: zooplankton and cockles eat the primary consumers. The first level consumers which include animals such as small fish and jelly fish feed on the herbivorous consumers.



The secondary consumers, must find a way to hunt for their prey to survive. Animals like big fish are considered secondary consumers. In my ecosystem I have included a squid, which eats big fish but are not the top predators instead they are 3rd level consumers.



The top predators include animals like sharks and dolphins.



Not all species of the Marine food chain live in the water and additional factors that affect the Ecosystem can happen on land. Birds, commercial fishing, PH levels in the Ocean caused by climate change can all play a part in the balance of the food web.



Jools Lawrence 8CST