

2019 KS4 School Dashboard

for governors & school leaders

Produce custom dashboards at fftaspire.org

Wadebridge School

LA Cornwall DFE 9084153 Produced November 2019 Version 1

What it is

Seven easy-to-use reports that help governors and school leaders to evaluate school performance using the latest 2019 DFE school performance indicators.

What it tells you

- What are the strengths and areas for improvement in your school?
- How does attainment and pupil progress compare to the national average over the last three years?
- How are you performing in different subjects?
- Do you have any under-performing groups of pupils?
- How might the context of your school affect performance?
- How does pupil attendance compare to the national average?

Important information for analysing 2019 results

Reformed GCSEs (based on a 9-1 grade scale) are included from 2017 onwards where applicable. Grade 5 represents a 'strong' pass; grade 4 a 'standard' pass.

To provide trends over time and context for the 2017 and 2018 results, FFT converts pupil results from previous years to the new 9-1 grades. The blue dotted line on trend charts highlights the change.

About the data shown

1 2 3

Actual results

Actual results for your school, using a range of measures such as averages and thresholds.



Gauges

These display headline indicators and whether actual results and pupils' progress are in line with, or significantly above or below, the national average.

ESTIMATED

← → 1 2 3

Pupil progress

The value added progress that your pupils have made from one key stage to the next. FFT compares your actual results to the estimated results based on the progress of similar pupils nationally.



Statistical significance

Green plus signs and red minus signs highlight where either actual results or pupils' progress is significantly above or below the national average.



Trends

The dashboard analyses school performance over 3-5 years. Any significant year-on-year improvement is highlighted using an up arrow. Significant declines in performance are highlighted with a down arrow.



Strengths & weaknesses

These highlight key pupil groups and subjects where progress is above or below the national average.

Working in partnership with



Data sources

Generated from FFT Aspire which includes data sourced from the DfE (National Pupil Database) and data calculated by FFT. FFT is accredited as a DfE supplier to receive early access to ASP data. Headline performance indicators will be consistent with the DfE School Performance Tables and ASP.

Overview

KS4 Attainment 2019 · Actual results

210 pupils

Attainment 8 (Overall)

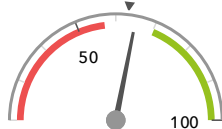
4.7



In line with the national average (4.6) ◀

% English & Maths (Grade 4+)

65%



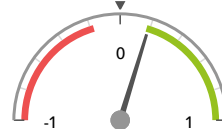
In line with the national average (63%) ◀

KS4 Progress 2019 · Value Added

207 matched pupils

Progress 8 (Overall)

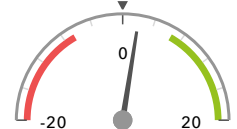
+0.19 + ↑



Significantly above the national average (0) ◀

% English & Maths (Grade 4+)

+2% ↑



In line with the national average (0%) ◀

KS4 higher and lower performing pupil groups 2019

	Higher performing	Lower performing
Overall achievement pupil progress	Middle attainers (96) + ↑ Female (104) + Spring Term (69) +	FSM (25) FSM (in last 6 years) (35) FSM (ever) (45)
English pupil progress	Female (104) + Spring Term (69) Middle attainers (96) ↑	SEN Support (19) FSM (25) Male (103) -
Mathematics pupil progress	Middle attainers (96) + ↑ Spring Term (69) ↑ Male (103) ↑	FSM (25) Autumn Term (56) FSM (in last 6 years) (35)
Subjects pupil progress	Small Business Non-GCSE (13) + Business Studies:Single GCSE (38) + ↑ Physical Education/Sport Studies GCSE (29) + ↑ Music GCSE (24) ↑ Multimedia Non-GCSE (29)	Physics GCSE (72) - Chemistry GCSE (72) - D&T Engineering GCSE (54) - Art & Design GCSE (67) - Biology GCSE (73) -

Attainment & progress

KS4 Attainment 2019

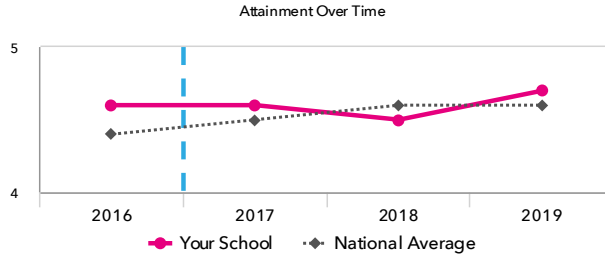
210 pupils

Attainment 8 (Overall)

4.7



In line with the national average (4.6)



KS4 Progress 2019

207 matched pupils

Progress 8 (Overall)

+0.19 ↑



Significantly above the national average (0)

% English & Maths (Grade 4+)

+2% ↑



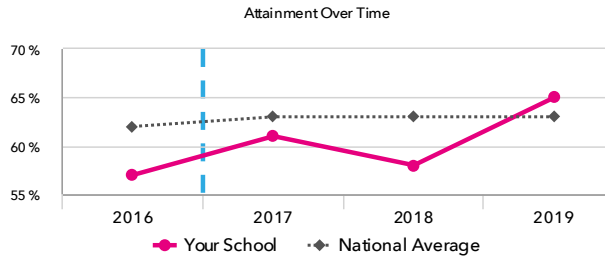
In line with the national average (0%)

% English & Maths (Grade 4+)

65%



In line with the national average (63%)



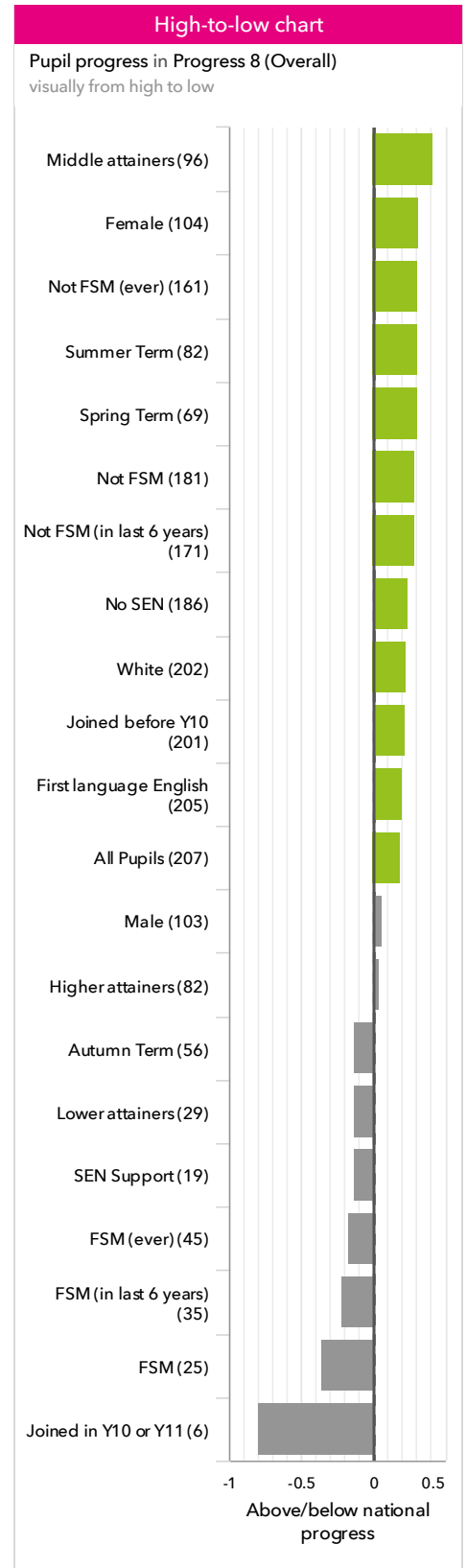
KS4 performance summary

	Actual results			Pupil progress		
	2017	2018	2019	2017	2018	2019
Number of Pupils / % Matched	190	205	210	98%	100%	99%
Attainment / Progress 8 (Overall)	4.6	4.5	4.7	-0.34 ↓	-0.20 ↓	+0.19 ↑
Attainment / Progress 8 (English)	5.0	4.8	4.9	-0.34 ↓	-0.22 ↓	+0.05
Attainment / Progress 8 (Maths)	4.2	4.2	4.5	-0.60 ↓	-0.41 ↓	+0.11 ↑
Attainment / Progress 8 (Ebacc)	4.2	4.3	4.6	-0.37 ↓	-0.19	+0.32 ↑
Attainment / Progress 8 (Open)	5.1	4.7 ↓	4.8	-0.14 ↓	-0.09	+0.22 ↑
% English & Maths (Grade 4+)	61%	58%	65%	-8% ↓	-7% ↓	+2% ↑
% English & Maths (Grade 5+)	34% ↓	34% ↓	40%	-14% ↓	-9% ↓	-1%
% Ebacc (Grade 4+)	18%	15% ↓	16% ↓	-7% ↓	-10% ↓	-7% ↓
% Ebacc (Grade 5+)	15% ↓	12%	10% ↓	-8% ↓	-5%	-6% ↓
% 5+ GCSEs (Grade 7+)	15%	16%	15%	-2%	+0%	+1%
Average entries per pupil	9.6 ↑	9.1 ↑ ↓	9.2 ↑	-0.0	+0.6 ↑	+0.9 ↑
Average entries per pupil (GCSE only)	9.1 ↑	8.8 ↑	8.9 ↑	+0.2	+0.9 ↑	+1.3 ↑
% Pupils taking 3 single sciences	0% ↓	25% ↑	34% ↑	-27% ↓	-2% ↑	+10% ↑

Pupil groups

KS4 Pupil groups performance 2019

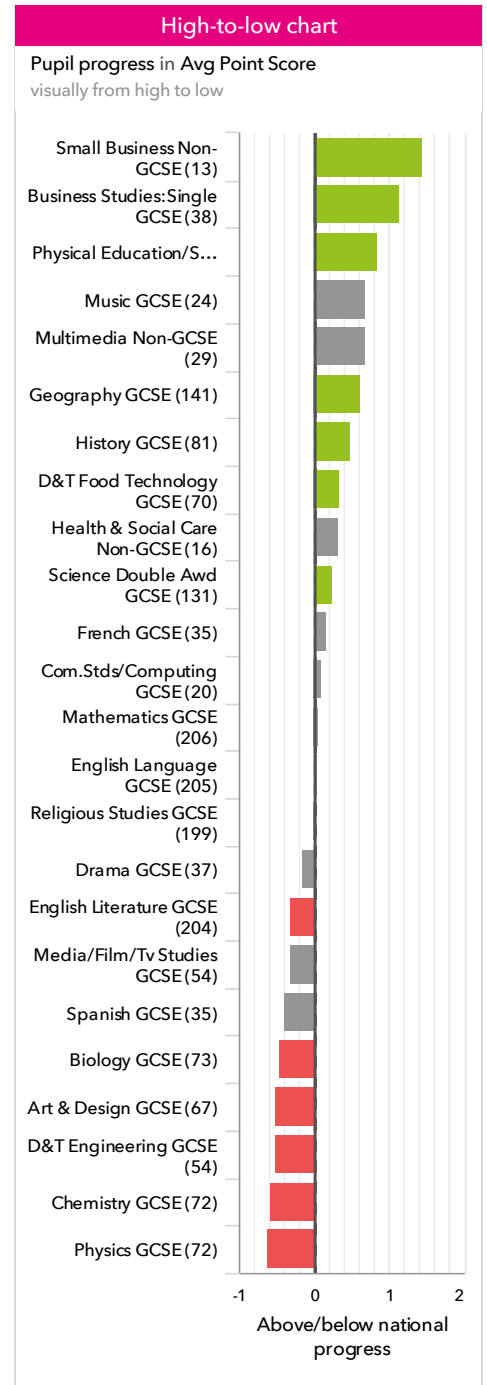
	Pupils	Actual results			Pupil progress			
		Attainment 8 (Overall)	% English & Maths (Grade 4+)	% Ebacc (Grade 4+)	Progress 8 (Overall)	% English & Maths (Grade 4+)	% Ebacc (Grade 4+)	
Summary	All Pupils	210	4.7	65%	16% ⬇	+0.19 ⬆ ⬆ ⬆	+2% ⬆	-7% ⬇
Gender	Male	105	4.6	62%	9% ⬇	+0.06 ⬆	+0%	-10% ⬇
	Female	105	4.9	69%	24%	+0.32 ⬆	+5%	-4%
DFE Prior Attainment	Higher attainers	82	6.0	91%	33% ⬇	+0.04	-1%	-11% ⬇
	Middle attainers	96	4.3 ⬆ ⬆ ⬆	60% ⬆	7%	+0.42 ⬆ ⬆ ⬆	+8% ⬆	-5%
	Lower attainers	29	2.4	7%	0%	-0.13	-6%	-2%
Pupil Premium	FSM (in last 6 years)	35	3.4	34%	3%	-0.22	-6%	-10%
	Not FSM (in last 6 years)	174	5.0	72%	19% ⬇	+0.29 ⬆ ⬆ ⬆	+4%	-6%
FSM	FSM	25	3.4	36%	4%	-0.36	-8%	-10%
	Not FSM	184	4.9	70% ⬆	18% ⬇	+0.29 ⬆ ⬆ ⬆	+4% ⬆	-7% ⬇
FSM Ever	FSM (ever)	45	3.6	40%	7%	-0.17	-6%	-9%
	Not FSM (ever)	164	5.1	73%	19% ⬇	+0.31 ⬆ ⬆ ⬆	+5%	-7%
Term of Birth	Autumn Term	56	4.6	63%	16%	-0.13	-3%	-10%
	Spring Term	71	5.0	72%	21%	+0.31 ⬆	+5%	-5%
	Summer Term	83	4.5	61%	12% ⬇	+0.31 ⬆ ⬆ ⬆	+4%	-6%
SEN Group	SEN Support	19	3.8	37%	5%	-0.13	-6%	-7%
	EHC Plan	1	3.4	0%	0%	+0.29	-10%	-1%
	No SEN	189	4.9	69%	17% ⬇	+0.24 ⬆ ⬆ ⬆	+4% ⬆	-7% ⬇
EAL	First language not English	1	3.3	0%	0%	+1.25	-11%	-2%
	First language English	208	4.8	66%	16% ⬇	+0.20 ⬆ ⬆ ⬆	+3% ⬆	-7% ⬇
Mobility	Joined in Y10 or Y11	6	2.4	17%	0%	-0.80	-1%	-3%
	Joined before Y10	204	4.8	67%	17% ⬇	+0.22 ⬆ ⬆ ⬆	+3%	-7% ⬇
Ethnicity	White	205	4.8	66%	17% ⬇	+0.23 ⬆ ⬆ ⬆	+3% ⬆	-7% ⬇
	Black African	1	1.5	0%	0%	-0.98	-6%	-1%
	Any Other	3	2.5	33%	0%	-1.00	-7%	-11%
	No Ethnicity Data	1	0.0	0%	0%	-2.88	-24%	-3%



Subjects

KS4 subject performance 2019

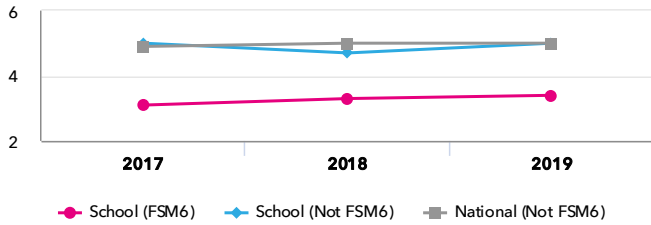
			Actual results			Pupil progress		
Pupils			Avg Point Score	% Grade 4+	% Grade 7+	Avg Point Score	% Grade 4+	% Grade 7+
English and maths	English Language GCSE	208	4.7	73%	16%	+0.05	+3%	+1%
	English Literature GCSE	207	4.4 -	64% -	16%	-0.31 -	-8% -	-1%
	Mathematics GCSE	209	4.5	71% ↑	15%	+0.07 ↑	+3% ↑	-2%
Ebacc Subjects	Biology GCSE	73	5.7	97% +	27% -	-0.45 -	+3%	-14% -
	Chemistry GCSE	72	5.5 - ↓	92%	25% -	-0.57 -	-1%	-16% -
	Com.Stds/Comp uting GCSE	20	4.6	70%	20%	+0.10	+8%	-1%
	D&T Engineering GCSE	54	3.6 -	41% -	9%	-0.52 -	-15% -	-5%
	French GCSE	35	4.9	77%	23%	+0.16	+6%	+2%
	Geography GCSE	144	5.1 +	71%	31% +	+0.62 +	+9% +	+10% +
	History GCSE	82	5.0 ↑	71% ↑	29%	+0.49 + ↑	+10% ↑	+6%
	Physics GCSE	72	5.4 - ↓	92%	22% - ↓	-0.61 -	-1%	-18% -
	Science Double Awd GCSE	134	3.9	60%	4% -	+0.25 + ↑	+8% ↑	-1%
	Spanish GCSE	35	4.3	51% -	17%	-0.39	-15%	-5%
Other High Value Subjects	Art & Design GCSE	67	4.4	63%	13%	-0.51 -	-12% -	-7%
	Business Studies:Single GCSE	39	6.1 + ↑	92% +	36% +	+1.14 + ↑	+19% +	+14% +
	D&T Food Technology GCSE	73	4.5	63%	15%	+0.35 +	+6%	+3%
	Drama GCSE	37	4.4	65%	14%	-0.16	-2%	-0%
	Health & Social Care Non-GCSE	16	4.7	69%	25%	+0.33	+1%	+7%
	Media/Film/Tv Studies GCSE	54	4.3	63%	11%	-0.31	-5%	-7%
	Multimedia Non-GCSE	30	4.5	73%	7%	+0.68	+13%	-4%
	Music GCSE	24	5.8	79%	42%	+0.69 ↑	+7% ↑	+16%
	Physical Education/Sport Studies GCSE	30	5.7 + ↑	90% + ↑	37% +	+0.85 + ↑	+17% + ↑	+17% +
	Religious Studies GCSE	202	4.8	65%	24%	+0.02 ↑	-1% ↑	+1%
	Small Business Non-GCSE	14	5.2	100% +	0%	+1.44 +	+24%	-11%



Disadvantaged pupils

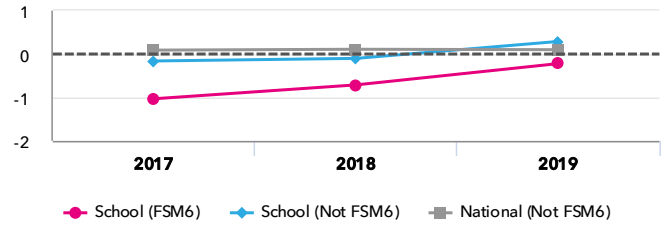
KS4 attainment for disadvantaged pupils 2019

Attainment 8 (Overall)

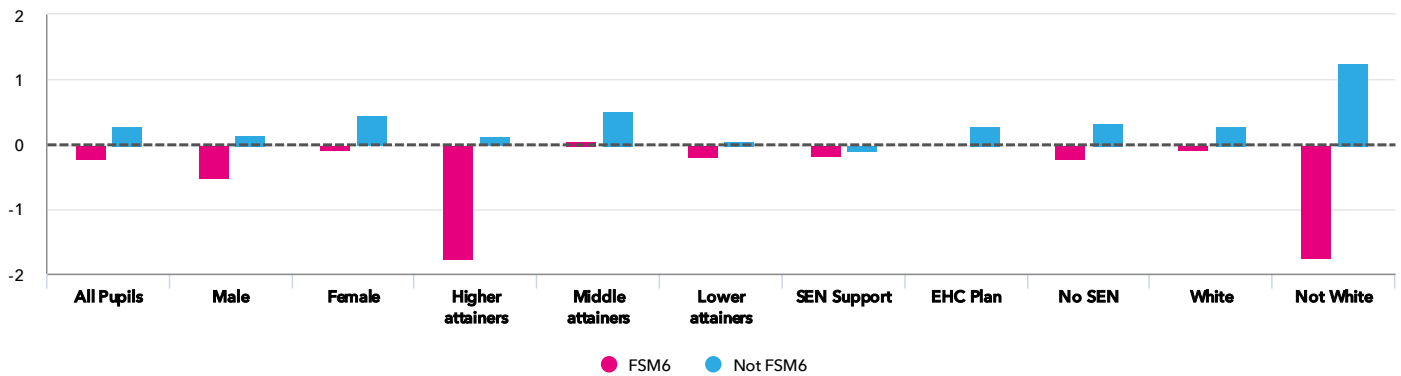


KS4 progress for disadvantaged pupils 2019

Progress 8 (Overall)



Progress gap Progress 8 (Overall)

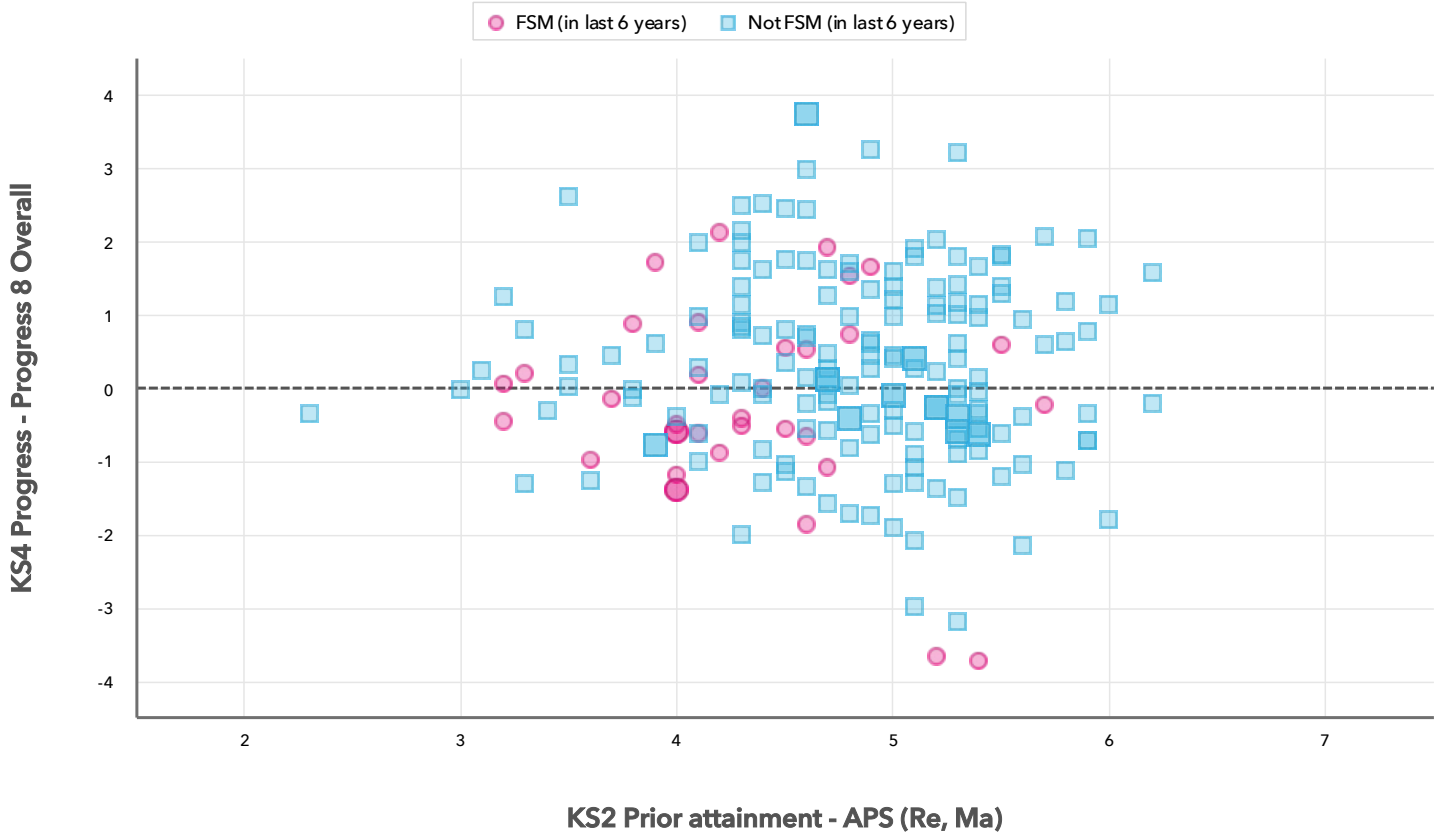


Attainment & progress

Pupils	Attainment			Progress					
	FSM6	Not FSM6	Attainment 8 (Overall)			Progress 8 (Overall)			
			FSM6	Not FSM6	Gap	FSM6	Not FSM6	Gap	
Summary	All Pupils	35	174	3.4	5	-1.6	-0.22	0.29 ↑	-0.51
Gender	Male	14	91	2.9	4.8	-1.9	-0.53	0.15	-0.68
	Female	21	83	3.8	5.2	-1.4	-0.02	0.45	-0.47
DFE Prior Attainment	Higher attainers	4	78	4.6	6.1	-1.5	-1.76	0.13	-1.89
	Middle attainers	21	75	3.7	4.5	-0.8	0.05	0.53	-0.48
	Lower attainers	10	18	2.5	2.5	0	-0.19	0.06	-0.25
SEN Group	SEN Support	5	14	2.7	4.1	-1.4	-0.18	-0.11	-0.07
	EHC Plan	-	1	-	3.4	-	-	0.29	-
	No SEN	30	159	3.6	5.1	-1.5	-0.23	0.33	-0.56
Ethnic Group	White	32	173	3.6	5	-1.4	-0.08	0.29	-0.37
	Not White	3	1	1.9	3.3	-1.4	-1.75	1.25	-3

Scatterplot

KS4 Pupil scatterplot 2019 210 pupils highlighted by Pupil Premium



Context

Context · Year 11

		Pupils	Comparative profile 2018 / 2019		Absence during Key Stage 4		Persistent absence during Key Stage 4	
		School	School	National	School	National	School	National
Summary	All Pupils	210	100%	100%	-	-	-	-
Gender	Male	106	50%	51%	-	-	-	-
	Female	104	50%	49%	-	-	-	-
DFE Prior Attainment	Higher attainers	82	39%	41%	-	-	-	-
	Middle attainers	96	46%	42%	-	-	-	-
	Lower attainers	29	14%	11%	-	-	-	-
Pupil Premium	FSM (in last 6 years)	35	17%	25%	-	-	-	-
	Not FSM (in last 6 years)	175	83%	75%	-	-	-	-
FSM	FSM	25	12%	14%	-	-	-	-
	Not FSM	185	88%	86%	-	-	-	-
FSM Ever	FSM (ever)	45	21%	33%	-	-	-	-
	Not FSM (ever)	165	79%	67%	-	-	-	-
Term of Birth	Autumn Term	57	27%	33%	-	-	-	-
	Spring Term	71	34%	32%	-	-	-	-
	Summer Term	82	39%	35%	-	-	-	-
SEN Group	SEN Support	19	9%	11%	-	-	-	-
	EHC Plan	1	0%	4%	-	-	-	-
	No SEN	190	90%	85%	-	-	-	-
EAL	First language not English	1	0%	17%	-	-	-	-
	First language English	209	100%	83%	-	-	-	-
Mobility	Joined in Y10 or Y11	7	3%	4%	-	-	-	-
	Joined before Y10	203	97%	96%	-	-	-	-
Ethnicity	White	206	98%	75%	-	-	-	-
	Black African	1	0%	5%	-	-	-	-
	Any Other	3	1%	4%	-	-	-	-