



Wadebridge School Careers Advice and Guidance Strategy



THE SCHOOLS VISION FOR CAREERS

KEY STAGES 3 AND 4

Wadebridge School aims to improve the success, progress and employability of our pupils through access to high quality IAG and outstanding learning opportunities, that will equip them with the knowledge and skills they need to embrace the fast changing world of work or study.

'Pupils understand how their education equips them with the behaviours and attitudes necessary for success in their next stage of education, training or employment and for their adult life.'

(Alignment to page 57 of Ofsted inspection handbook 2018)

KEY STAGE 5

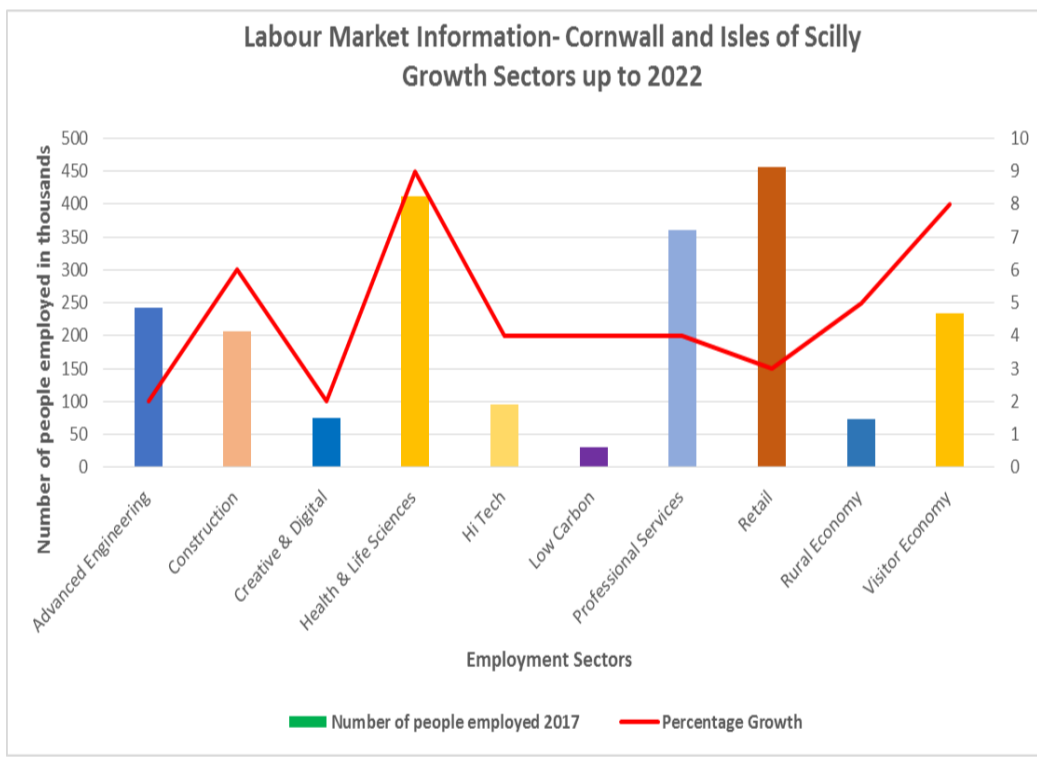
In the schools Sixth form, learners will receive high quality impartial careers guidance that prepares them for their chosen next steps and enables them to make well-informed decisions about their future plans.

(Alignment to page 70 of Ofsted inspection handbook 2018)

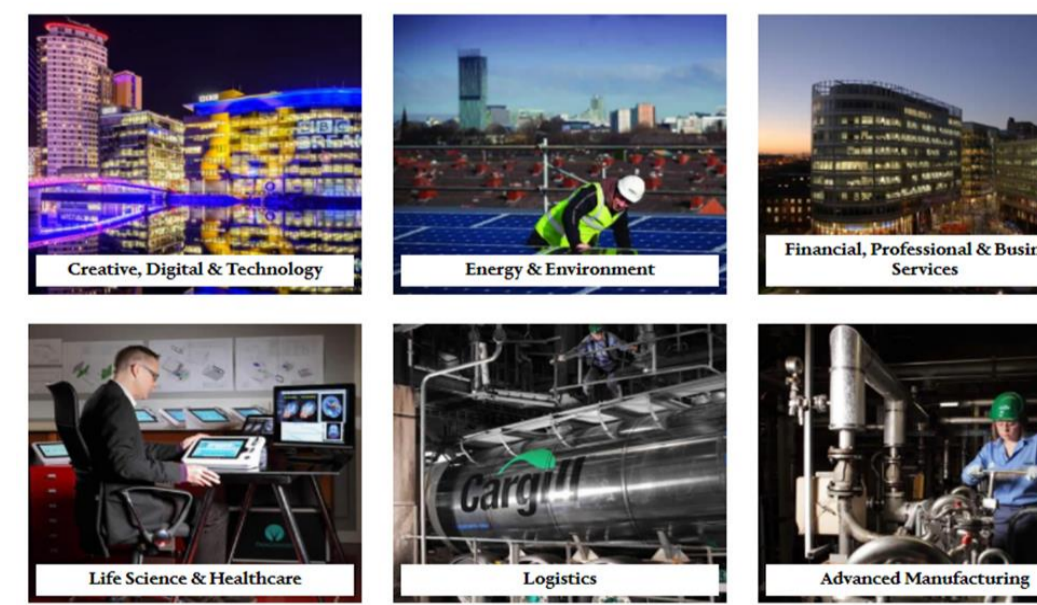
The Gatsby benchmarks set out a framework for schools to deliver 'good careers guidance' to their pupils. The benchmarks below are fully implemented into our strategy

1. A stable careers programme	Every school should have an embedded programme of career education and guidance that is known and understood by students, parents, teachers, governors and employers.
2. Learning from career and labour market information	Every student, and their parents, should have access to good quality information about future study options and labour market opportunities. They will need the support of an informed adviser to make best use of available information.
3. Addressing the needs of each student	Students have different career guidance needs at different stages. Opportunities for advice and support need to be tailored to the needs of each student. A school's careers programme should embed equality and diversity considerations throughout.
4. Linking curriculum learning to careers	All teachers should link curriculum learning with careers. STEM subject teachers should highlight the relevance of STEM subjects for a wide range of future career paths.
5. Encounters with employers and employees	Every student should have multiple opportunities to learn from employers about work, employment and the skills that are valued in the workplace. This can be through a range of enrichment activities, including visiting speakers, mentoring and enterprise schemes.
6. Experiences of workplaces	Every student should have first-hand experiences of the workplace through work visits, work shadowing and/or work experience to help their exploration of career opportunities and to expand their networks.
7. Encounters with further and higher education	All students should understand the full range of learning opportunities that are available to them. This includes both academic and vocational routes and learning in schools, colleges, universities and in the workplace.
8. Personal guidance	Every student should have opportunities for guidance interviews with a Careers Adviser, who could be internal (a member of school staff) or external, provided they are trained to an appropriate level. These should be available whenever significant study or career choices are being made.

Growth Sectors in Cornwall and the Isles of Scilly up to 2022



The 6 sectors that are described as 'thriving' within Cornwall and the Isles of Scilly.



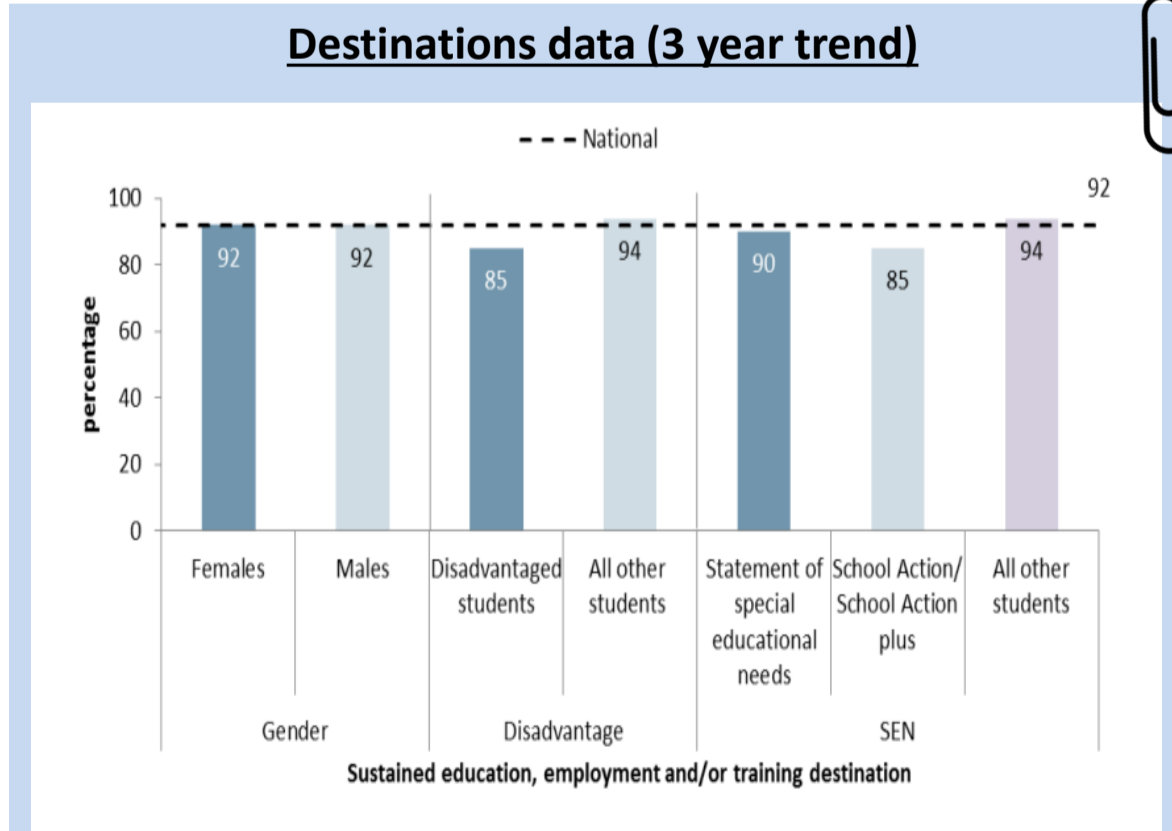
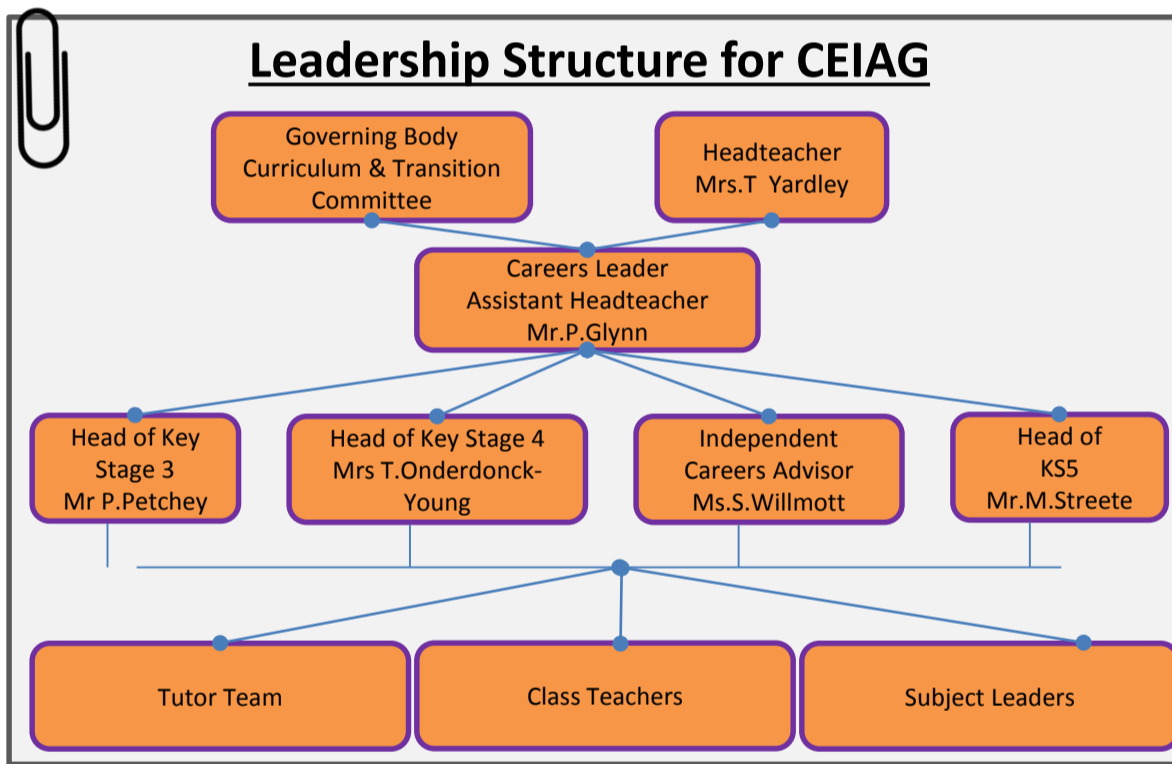
Change this to construction, health and life sciences, Space, Manufacturing, retail and visitor economy

- Register and Liaise with a Career and Enterprise advisor
- Complete **compass benchmark** assessment each year (review of strategy)
- Annually: Use tracker/planner tool to action plan from compass assessment
- Apply for a careers quality assurance award
- Appointment of Careers Leader before September
- Fortnightly meeting help with member of SLT to monitor progress of strategy
- CPD provided to the Careers Leader / all staff for 'Start Profile'
- Termly careers newsletter for pupils/staff (opportunities and info)
- Focus on breaking gender stereotypes
- Twitter account set up and managed by the Careers leader / Tweet live
- Departments to provide one interaction with an employer linked to their career each year during curriculum time.
- Key Stage questionnaires for Careers in Sep : Questions to generate enquiries
- Any trips need logging on this map and evaluating by departments
- Tracking from Y7 to Y13.
- Y8, Y11 and Y12 questionnaires that allow pupils to ask a L6 advisor a question and receive a personalised written reply.

	HALF TERM 1 (SEPTEMBER – OCTOBER)	HALF TERM 2 (NOVEMBER – DECEMBER)	HALF TERM 3 (JANUARY – FEBRUARY)	HALF TERM 4 (FEBRUARY – MARCH)	HALF TERM 5 (APRIL – MAY)	HALF TERM 6 (JUNE – JULY)
YEAR 7	<ul style="list-style-type: none"> Residential week European Languages Week Spanish Evening G&T mentoring Drama Visit War Horse Assemblies <ul style="list-style-type: none"> Food Bank 	<ul style="list-style-type: none"> Tubestation Visit G&T mentoring English Visit to London Carol Service Assemblies <ul style="list-style-type: none"> Digital Safety Attendance Assembly Inspirational People 	<ul style="list-style-type: none"> Geography & Art trip to Eden G&T mentoring Assemblies <ul style="list-style-type: none"> Bejeman Centre Attendance Careers World of work Current Affairs 	<ul style="list-style-type: none"> SIG Residential G&T mentoring Jazz Workshops & Evening Concert Assemblies <ul style="list-style-type: none"> Science Week Attendance Digital safety 	<ul style="list-style-type: none"> Junior Maths Challenge G&T mentoring Civil War Day Assemblies <ul style="list-style-type: none"> 	<ul style="list-style-type: none"> International Women in Engineering Day Cornwall School Games Final Geography/History Visit European Visits Resilience Week Sports Day
YEAR 8	<ul style="list-style-type: none"> G&T mentoring Drama Visit War Horse Assemblies <ul style="list-style-type: none"> Food Bank RAF: Air cadets Tutor Time / PSHE	<ul style="list-style-type: none"> WW1 day G&T mentoring Carol Service Pantomime Trip Assemblies <ul style="list-style-type: none"> Digital Safety Inspirational People Hate Crime – Police Tutor Time / PSHE	<ul style="list-style-type: none"> Careers Fair at Eden Languages at work WW1 Battlefield G&T mentoring Assemblies <ul style="list-style-type: none"> Bejeman Centre Attendance Careers World of work Options Tutor Time / PSHE	<ul style="list-style-type: none"> 1:1 Options Interviews with students and parents G&T mentoring Jazz Workshops & Evening Concert College Providers and Crossroads at Parents Evening Assemblies <ul style="list-style-type: none"> Science Week Attendance Digital Safety 	<ul style="list-style-type: none"> Junior Maths Challenge G&T mentoring Assemblies <ul style="list-style-type: none"> Year 8 camp 	<ul style="list-style-type: none"> Year 8 residential International Women in Engineering Day Cornwall School Games Final Big Bang SW – reward trip Resilience Week Sports Day
YEAR 9	<ul style="list-style-type: none"> G&T Mentoring Drama Visit War Horse History Visit Buckland Abbey WW1 Battlefields Trip Green power Project Science Engineering Workshop (STEM) Assemblies <ul style="list-style-type: none"> Digital Safety Food Bank DoE 	<ul style="list-style-type: none"> Preparing Ourselves for the World of Work (POWOW Day) G&T mentoring PP Truro College Trip Carol service Pantomime Trip Assemblies <ul style="list-style-type: none"> Digital Safety Hate Crime – Police 	<ul style="list-style-type: none"> French Exchange Space Skills Show Maths Challenge G&T mentoring Assemblies <ul style="list-style-type: none"> Bejeman Centre Inspirational People Careers World of work Steins Soft skills 	<ul style="list-style-type: none"> Student support with Y6 Maths & Science Challenge SIG residential G&T mentoring Jazz Workshops Assemblies <ul style="list-style-type: none"> Science Week DoE Digital Safety 	<ul style="list-style-type: none"> G&T mentoring Assemblies <ul style="list-style-type: none"> Speeches 	<ul style="list-style-type: none"> Art Visit St Ives International Women in Engineering Day Cornwall School Games Final Bronze DoE practice Resilience Week Sports Day
YEAR 10	<ul style="list-style-type: none"> Crossroads Careers: Level 6 Independent CEIAG group / 1:1 Pentreath Ltd: Game Changers: 1:1 CEIAG Army in Education: Group work: aspirations Aspiration Mentoring: Boys MaBLE Mentoring: G&T DoE Training Bronze DoE Assessment G&T mentoring Science Engineering Workshop (STEM) Art Visit Aquarium Drama Visit War Horse Geography field work Assemblies <ul style="list-style-type: none"> Digital Safety Work experience <ul style="list-style-type: none"> Food Bank Tutor Time	<ul style="list-style-type: none"> Crossroads Careers: Level 6 Independent CEIAG group / 1:1 Pentreath Ltd: Game Changers: 1:1 CEIAG Army in Education: Group work: aspirations Aspiration Mentoring: Boys MaBLE Mentoring: G&T MaBLE Mentoring: G&T DoE Training PP Truro College Trip Debating Workshops Assemblies <ul style="list-style-type: none"> Digital Safety Bejeman Centre Careers World of work Steins Work Experience 	<ul style="list-style-type: none"> Crossroads Careers: Level 6 Independent CEIAG group / 1:1 Pentreath Ltd: Game Changers: 1:1 CEIAG Aspiration Mentoring: Boys MaBLE Mentoring: G&T National Apprenticeship Show PP Truro College Trip Debating Workshops Assemblies <ul style="list-style-type: none"> Bejeman Centre Careers World of work Steins Work Experience 	<ul style="list-style-type: none"> Crossroads Careers: Level 6 Independent CEIAG group / 1:1 Pentreath Ltd: Game Changers: 1:1 CEIAG Aspiration Mentoring: Boys MaBLE Mentoring: G&T Cornwall Skills Show College Providers and Crossroads at Parents Evening Sig residential Jazz Workshops & Evening Concert History Visit Berlin Assemblies <ul style="list-style-type: none"> Science week Maths Challenge DoE Digital Safety 	<ul style="list-style-type: none"> Crossroads Careers: Level 6 Independent CEIAG group / 1:1 Pentreath Ltd: Game Changers: 1:1 CEIAG Aspiration Mentoring: Boys MaBLE Mentoring: G&T Multi Agency Day Assemblies <ul style="list-style-type: none"> Perfect Applications NCS Revision Strategy 	<ul style="list-style-type: none"> Crossroads Careers: Level 6 Independent CEIAG group / 1:1 Pentreath Ltd: Game Changers: 1:1 CEIAG Aspiration Mentoring: Boys MaBLE Mentoring: G&T Silver DoE Training Geography Field Work International Women in Engineering Day Cornwall School Games Final Work Experience 2 weeks Assemblies <ul style="list-style-type: none"> Work Experience
YEAR 11	<ul style="list-style-type: none"> Crossroads Careers: Level 6 Independent CEIAG group / 1:1 CSW Ambitions Project: 1:1 CEIAG Local FE College supported visits DoE Training Drama Visit War Horse Silver DoE assessment MaBLE Mentoring: G&T KS/SLT Mentoring Assemblies <ul style="list-style-type: none"> Food Bank Tutor Time	<ul style="list-style-type: none"> Crossroads Careers: Level 6 Independent CEIAG group / 1:1 CSW Ambitions Project: 1:1 CEIAG College Providers and Crossroads at Parents Evening Local FE College supported visits MaBLE Mentoring: G&T MaBLE Mentoring: G&T KS/SLT Mentoring HMS Belfast Assemblies <ul style="list-style-type: none"> Fundraising Digital Safety 	<ul style="list-style-type: none"> Crossroads Careers: Level 6 Independent CEIAG group / 1:1 CSW Ambitions Project: 1:1 CEIAG Local FE College supported visits MaBLE Mentoring: G&T KS/SLT Mentoring Enterprise Advisers; Mock Interviews Assemblies <ul style="list-style-type: none"> Bejeman Centre National Citizenship Service (NCS) Careers World of work Steins Gateways 	<ul style="list-style-type: none"> Crossroads Careers: Level 6 Independent CEIAG group / 1:1 CSW Ambitions Project: 1:1 CEIAG Local FE College supported visits MaBLE Mentoring: G&T KS/SLT Mentoring Jazz Workshops Enterprise Advisers; Mock Interviews Assemblies <ul style="list-style-type: none"> Post 16 Science Week Current Affairs Digital Safety 	<ul style="list-style-type: none"> Crossroads Careers: Level 6 Independent CEIAG group / 1:1 CSW Ambitions Project: 1:1 CEIAG MaBLE Mentoring: G&T KS/SLT Mentoring International Women in Engineering Day Cornwall School Games Final Assemblies <ul style="list-style-type: none"> Inspirational People NCS 	<p>Once Y11 leave Y10 DP will be interviewed in HT6</p>
YEAR 12						
YEAR 13	<ul style="list-style-type: none"> Geography Residential 7th – 9th October 			<ul style="list-style-type: none"> Geography Field trip 	<ul style="list-style-type: none"> DoE Gold Practise 	<ul style="list-style-type: none"> Work Experience 1 week Ucas Day University Visits

Post-16 Open Days

Bodmin College	Thurs 18 th Oct 2018 Wed 3 rd Apr 2019	www.bodmincollege.co.uk/sixth-form
Cornwall College – Camborne, St Austell, Newquay, Saltash	Tues 16 th October 2018 Sat 10 th November 2018 Sat 19 th January 2019 Sat 16 th March 2019	www.cornwall.ac.uk
Cornwall College A Level Evening St Austell	Thurs 11th October 2019	www.cornwall.ac.uk
Cornwall College Apprenticeship Camborne & St Austell.	Wednesday 1 st May 2019	www.cornwall.ac.uk
Falmouth Marine School	Sat 3 rd November 2018 Sat 2 nd February 2019 Saturday 30 th March 2019	www.falmouthmarineschool.ac.uk
Truro College	Sat 3 rd November 2018 Thurs 6 th December 2018 Thurs 10 th January 2019 Thurs 17 th January 18 eve Sat 2nd March 2019 Thurs 2 nd May 2019	www.truro-penwith.ac.uk
Callywith College	Saturday 24 th November 2018 Thursday 7 th February 2019 Saturday 9 th March 2019 Wednesday 9 th May 2019	www.callywith.ac.uk
Duchy College Rosewarne and Stoke Climsland	Saturday 24 th November 2018 Saturday 26 th January 2019 Saturday 30 th March 2019	www.duchy.ac.uk www.duchy.ac.uk/tasterdays



Staying in education or entering employment

