

Careers Programme Overview

2025/2026 Wadebridge School



Vision Statement

Wadebridge School aims to improve the success, progress and employability of our pupils through access to high quality Career Guidance and outstanding learning opportunities, that will equip with them with the knowledge and skills they need to embrace the fast changing world of work.

Contact: Mr. S. Simmonds

Email: ssimmonds@wadebridge.cornwall.sch.uk

Telephone: 01208 812881

Milestones and Learning Outcomes

Year 11

Each student to have:

- an opportunity for individual careers guidance
- a plan for the next stage of their careers journey;
- secured a place in further education, or employment with training;
- the opportunity and support to reach their full potential with their qualifications.
- a full description of achievements, experiences and skills on Career Pilot.
- completed the Year 11 Compass+ careers questionnaire.

Year 10

Each student to have:

- experienced a block work experience placement.
- had the opportunity to visit local colleges & 6th forms.
- an awareness of both academic, vocational and technical pathways at post-16, including apprenticeships supported internships.
- started exploring their own possible post-16 pathways.
- added to their achievements, experiences and skills on Career Pilot.
- completed the Year 10 Compass+ careers questionnaire.

Year 9

Each student to have:

- experience of visiting a workplace
- explored their dream job and the local labour market.
- added to their achievements, experiences and skills on Career Pilot.
- gained understanding of the world of work through the curriculum
- develop and record their skills through the enrichment programmes.
- completed the Year 9 Compass+ careers questionnaire

Year 8

Each student to have:

- explored a range of jobs and the local labour market.
- confidence about choosing their Key Stage 4 options.
- added to their achievements, experiences and skills on Career Pilot.
- had the opportunity to meet with employers and organisations through networking events.
- completed the options questionnaire (parents as well).

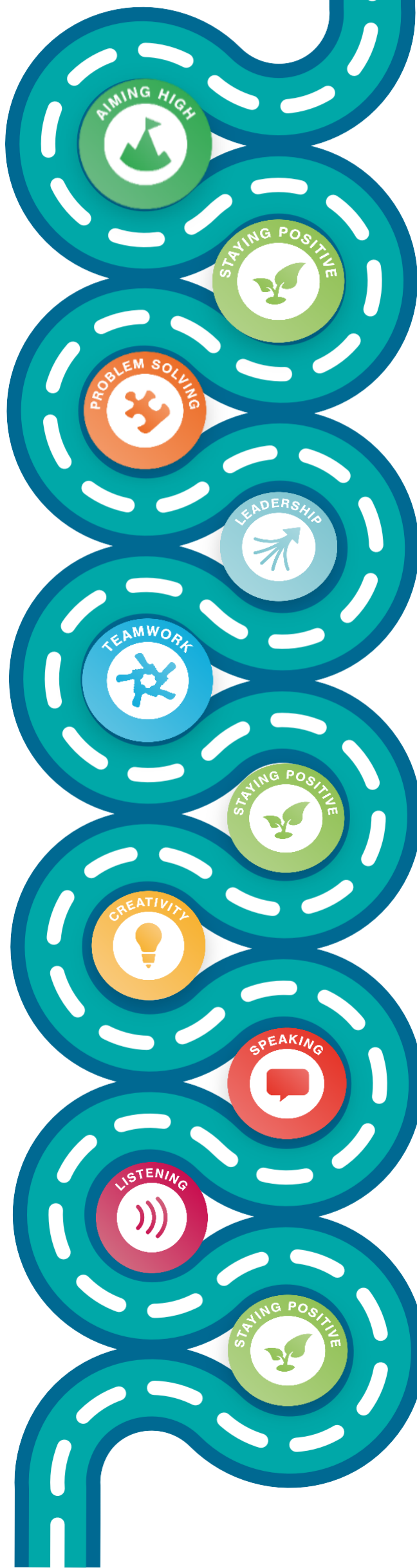
Year 7

Each student to have:

- developed more confidence and skills through induction activities;
- begun to build awareness of themselves as someone preparing for the world of work;
- started to explore the world of work and a variety of jobs;
- set-up a Career Pilot account and start to build familiarity with how to use it;
- completed the Year 7 Compass+ questionnaire.



Community Ambition Respect Endeavour
Cooperation Achievement Responsibility Enjoyment



Key Events and Experiences

Year 11

- Tutor time careers guidance – Career Pilot: career action plans, budgeting, post-16 applications, personal statements, interview techniques.
- Assembly careers guidance information – colleges and pathways .
- Duke of Edinburgh – Silver.
- Student Senior Leadership Team.
- One to one careers guidance sessions with level 6 Careers Adviser.
- Year 11 trial and final exams.
- Skills for life CARE Values

Year 10

- Tutor time Careers Guidance – Career Pilot: LMI & post-16 pathways, CVs, applications & next destinations.
- Identified subject Careers Guidance links.
- Assembly Careers Guidance information – colleges and pathways.
- Bespoke visits to local post-16 providers.
- Duke of Edinburgh – Silver.
- Volunteering – Employer Opportunities
- Work experience research, application, and placement.
- Year 10 trail exams.
- Skills for life CARE Values

Year 9

- Tutor Time Careers Guidance – Career Pilot: Employability Skills., Aiming high, career goals, LMI, skills audit.
- Identified subject Careers Guidance links.
- Assembly Careers Guidance – skills, attributes and qualifications.
- Employer Visits and Employer events
- Duke of Edinburgh – Bronze.
- Enrichment Programme.
- Skills for life CARE Values

Year 8

- Tutor Time Careers Guidance - Career Pilot: job sectors & options.
- KS4 options support – options evening, individual meeting.
- Identified subject Careers Guidance links.
- Assembly Careers Guidance – next steps (options).
- Employer Visits and Employer events
- FE and HE Visits
- Skills for life CARE Values

Year 7

- Tutor Time Careers Guidance – Career Pilot intro; Who am I? Work & jobs.
- Identified subject Careers Guidance links.
- Assembly Careers Guidance – the changing world of work.
- RSHE - developing skills for life.
- Year Activities – skills for life CARE Values .
- Applying for roles in tutor group.

Inspiring and preparing young people for the world of work.