

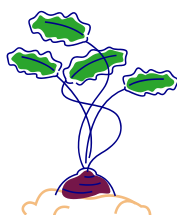


School Allotment

The school acquired an allotment plot via WAAGS (Wadebridge Allotment Society) in 2010 and this was within walking distance of the school. However, it was decided to move the plot to school site (2013) so that the students would gain greater ownership of their work.

As a school we believe this project will give the young people of our community a sense of ownership and responsibility. It will give them an opportunity to develop some key skills that will help with future employment as well as in school and hopefully an opportunity to work with members of the local community to show that young people have more to offer than is sometimes portrayed in the media:

- Team work – it is hoped all year groups will eventually be involved.
- Creativity – initial “lead persons” will design the plot layout and, with discussions via the canteen and the Food Technology department, decide on items to grow.
- Self-managers – they will need to establish various committees of responsibility to ensure the smooth running of the plot e.g. finance.
- Effective participators – students from each year group will need to be involved. It is hoped that some of the silver and gold award D of E students in the sixth form will be invited to help supervise younger students when they attend allotment club after school.



Year 8 students during Environment Days (2nd - 3rd May 2013) helped to prepare some of the new beds on school site in preparation for the transition of fruit bushes. The same students now in Year 9 are working the plot via their Food Technology and EPR lessons to ensure its success.

