



## Wadebridge School

### Summary of Parent, Pupil and Staff Surveys

In March 2013, as part of its on-going processes of self-evaluation and school improvement, the school commissioned Kirkland Rowell to carry out satisfaction surveys with pupils, parents and staff. The analysis of these reports runs to over 300 pages and compares our results to those from other similar schools. This document attempts to summarise the main findings and as such cannot possibly cover every result or comment from the three very detailed reports.

The school is very grateful for everyone's time in completing the questionnaires; 434 parental surveys were returned, 907 pupils and 80 members of staff responded, representing an excellent overall response rate.

#### Parental survey

- The parents gave a 'very good' overall performance score (79%), whilst among the parents whose children were not in their first year at the school 25% said the school had improved over the last year while only 3% thought that the school's performance was worse. Of the parents of new pupils, only 3% felt that the school had not lived up to their expectations while 20% said the school was better than they had expected it to be.
- The following subjects were all awarded an overall satisfaction rating of more than 70% by parents which can be considered to be a success:

Electronic Products (90.5), Graphic Products (86.4), Business Studies (84.3), Media Studies (79.1), PSHE (77.9), Resistant Materials (77.0), Mathematics (76.6), EPR (75.2), Food Technology (74.2), English (73.7), Design Technology (73.6), Geography (73.5), ICT (72.4), Drama (71.7), History (70.2).

- No subject received a rating below 60% but clearly we would like all subjects to be considered successful by parents (over 70%) and we will be working on improving these ratings in those subjects not listed above.
- When judging the school's core priorities a score of more than 65% can be considered a success and the school is delighted that parents rated all areas above this benchmark:

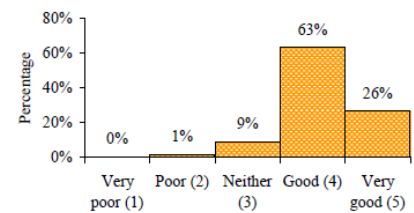
Developing confidence (72.7), School discipline (72.5), Social health education (72.3), Truancy control (72.2), School communication (72.1), Careers advice (71.9), Control of bullying (71.9), Availability of resources (70.8), Computer access (70.7), Caring teachers (69.8), Teaching quality (69.8), Developing moral values (69.7), Levels of homework (69.7), Choice of subjects (69.6), Exam results (69.6), Community spirit (69.4), Happiness of child (69.2), Developing potential (69.2), School security (68.9), School facilities (67.7).

- From the additional issues investigated the following results were seen, again 65% can be considered a success:  
Encouraging and listening to parent views (73.9), Written reports (73.0), Transport to and from school (72.4), Value for money (72.3), Ensuring pupils do best and make good progress (71.9), Transfer from previous school (71.3), Access to staff (71.2), Looking after pupils well (70.5), Encouraging and listening to pupil views (70.0), Treating all pupils fairly and equally (69.0), Regular marking of work (68.0), Parents evening (67.7), Teaching for special needs (67.1), Suitable class sizes (66.0).
- The lowest ranked issue was school uniform (63.5) which shows that we need to give some attention to this area, especially the way the students wear the uniform!

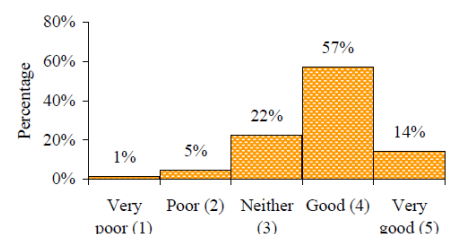
#### The pupil surveys

- The pupils gave a 'very good' overall performance score (70%), whilst among the pupils who had been attending the school for over a year, 35% said the school had improved over the last year.

Overall, rate the performance of the school



Overall, rate the performance of the school



- When asked to judge which subjects they made good progress in, pupils gave the following weighted scores, 80% or over can be considered a success:

Electronic Products (98.0), Drama (95.6), PSHE (94.9), Business Studies (94.3), Food Technology (91.8), Geography (90.7), ICT (88.8), Mathematics (88.1), English (87.8), EPR (86.3), Physical Education (84.9), Design Technology (84.7), Media Studies (83.9), Biology (82.3), Science (80.8), Music (80.4).

- No subject received a rating below 70% but clearly we would like all subjects to be considered successful by pupils (over 80%) and we will be working on improving these ratings in those subjects not listed above.
- When judging other areas of the school's work scores of 70% or over are considered to be successful and pupils were clearly pleased with these areas:

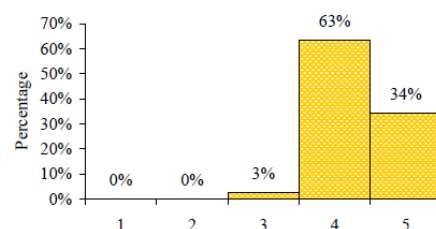
Careers advice (81.5), School facilities (80.0), Computer access (78.3), School discipline (76.8), Availability of resources (76.7), Choice of subjects (75.4), School communication (75.3), Truancy control (74.6), Community spirit (74.5), Social health education (74.4), Exam results (74.2), Control of bullying (73.3), School security (73.2), Developing potential (72.9), Caring teachers (72.2).

- Pupils were least satisfied with the levels of homework which achieved a score of only 57.6, whilst this may not be surprising it does require some further investigations.
- From some additional issues related to student happiness investigations revealed the following results, again scores over 70% can be considered a success:

Encouraging and listening to parents views (76.6), Transfer from previous school (76.4), Access to staff (75.4), Parents evening (73.6), Ensuring pupils do best and make progress (73.6), Transport to and from school (73.3), Suitable class sizes (72.4), Teaching for special needs (71.9), Looking after pupils well (70.5), Written reports (69.8), School uniform (62.6), Encouraging and listening to pupils' views (62.5).

- Pupils were least satisfied with School uniform (62.6) and Encouraging and listening to pupils' views (62.5) and the school needs to consider this in its future plans.

Overall, rate the performance of the school



### Staff survey

- Staff gave an excellent overall performance score of 83% and 38% said the school had improved over the last year
- In judging the school's performance in core functions staff gave the following ratings where a score of 60% or more can be considered a success:

Pupils' respect for staff/others (76.0), Arrangements for staff cover (72.9), Pupils' attitudes to learning (72.1), Professional development opportunities (72.0), Pupil punctuality (71.1), Opportunities for staff initiative (70.8), Overall sense of common purpose (69.3), Equal opportunities for pupils (69.3), Opportunity for staff to offer ideas (68.7), Equal opportunities for staff (67.3), Communication between SLT and staff (66.5), Job satisfaction (66.5), Child protection procedures (66.3), Handling of personal issues (64.7), Support from line managers (63.4), Clarity of development plan (61.5).

- Induction of new staff scored 59.0 but this falls below the success threshold of 60% and plans are being put in place to improve this.
- One of the most pleasing responses on the staff survey was that 100% of staff felt that they would recommend the school to parents.

Overall the school is very pleased with the results of these surveys as they fairly conclusively show that parents, pupils and staff feel confident in the vast majority of the work of the school. One or two areas have come out as requiring some improvement and, as we are always seeking to improve things where we can, this has proved a very useful exercise in this regard. The intention is to repeat one or more of these surveys in a couple of years' time to see if we have improved in these areas and to check our performance across the board.

Once again the school would like to say a very big 'thank you' to everyone who completed a survey.